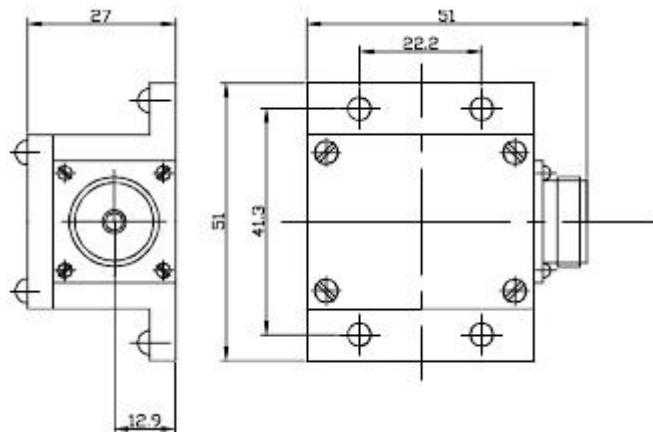


Model UCL-STF150 150 Watts DC-2GHz



Inset terminations are used in quantitatively absorbing energy of RF and microwave system, they are commonly used as dummy loads of antenna and transmitter. UCL-STF inset termination's average power 30W, frequency range from 7.5-8.5GHz and the features include wide frequency band, low VSWR, excellent capacity in anti-pulse and anti-burnout etc.

MECHANICAL SPECIFICATIONS

Connectors	Brass Nickel Plated
Male Pin	Brass Gold Plated
Female Pin	Beryllium Copper Gold Plated
Housing	Aluminum
Temp Range	-55°C~+125°C
Dimensions	51×51×27mm
Weight	50g

RoHS Compliant: Yes

ELECTRICAL SPECIFICATIONS

Model Number	Frequency Range (GHz)	Max VSWR
UCL-STF150-1	DC-1	1.15
UCL-STF150-2	1-2	1.40

NOMINAL IMPEDANCE: 50Ω

AVERAGE POWER: 150W average to 25°C ambient temperature, derated linearly to 15W @ 125°C.

PEAK POWER: 1KW (5μs pulse width with 15% duty cycle)

CONNECTOR TYPE: N,SMA(M)

Notes:

1. Dimensions Tolerance $\pm 2\%$
2. Dimensions and specifications refer to connector type N unless otherwise specified.
3. Custom designs available.