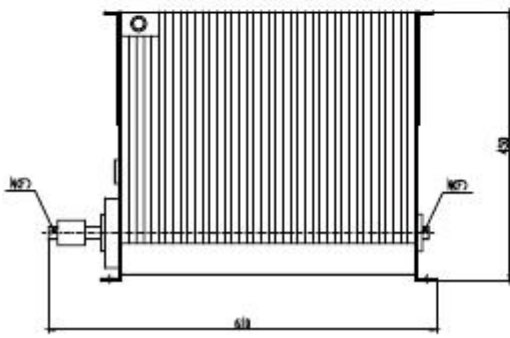


## Model UCL-HP2000-C(D) DC-2GHz 2000 Watts

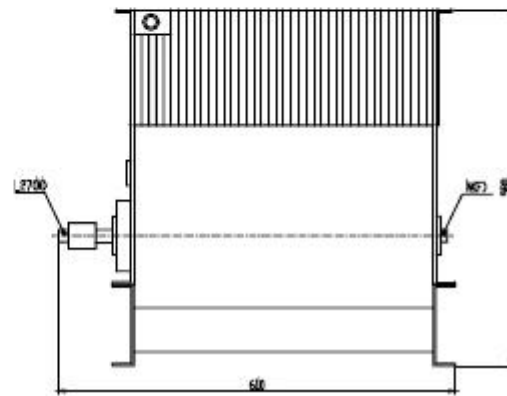
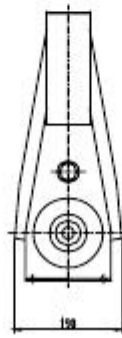


Coaxial fixed attenuators are used in absorbing energy of transmission line, expanding power range and controlling power level, they are also used in accurately measuring power or spectrum of RF microwave transmitters accompany with small power meter, comprehensive tester or spectrum analyzer.

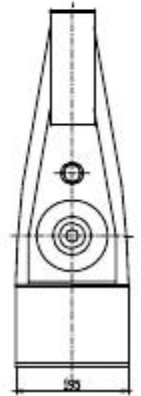
UCL-HP serial oil-cooled coaxial attenuators' average power 1W-10KW, frequency range DC-2GHz and feature wide frequency band, low VSWR, flatness attenuation value, excellent capacity in anti-pulse and anti-burnout.



C



D



### MECHANICAL SPECIFICATIONS

Connectors	Male Pin	Female Pin	Housing	Temp Range	Dimensions	Weight
Brass Nickel Plated	Brass Gold Plated	Beryllium Copper Gold Plated	Aluminum, Gray Powder Coat	-40° C ~ +45° C	C:610x190x450mm D:610x195x580mm(with fans)	C:27Kg D:30Kg

### ELECTRICAL SPECIFICATIONS

Model Number	Frequency Range(GHz)	Attenuation Value & Accuracy (dB)				Max VSWR
		20	30	40	50	
UCL-HP2000-C(D)	DC-0.7	/	±1.0	±1.0	±1.0	1.2
	0.7-2	Attenuation Curve Available				1.3

Note: XX refer to attenuation value in dB

**NOMINAL IMPEDANCE:** 50Ω

**AVERAGE POWER:**2000W

**PEAK POWER:**50KW

**COOLING METHOD:** oil-cooled+ forced draft

**OPERATING POSITION:** Horizontal only

**CONNECTOR TYPE:** N, L27, 7/16

#### Notes:

1. Dimensions Tolerance ±2%
2. Dimensions and specifications refer to connector type N unless otherwise specified.
3. Custom designs available for other special attenuation value & accuracy.